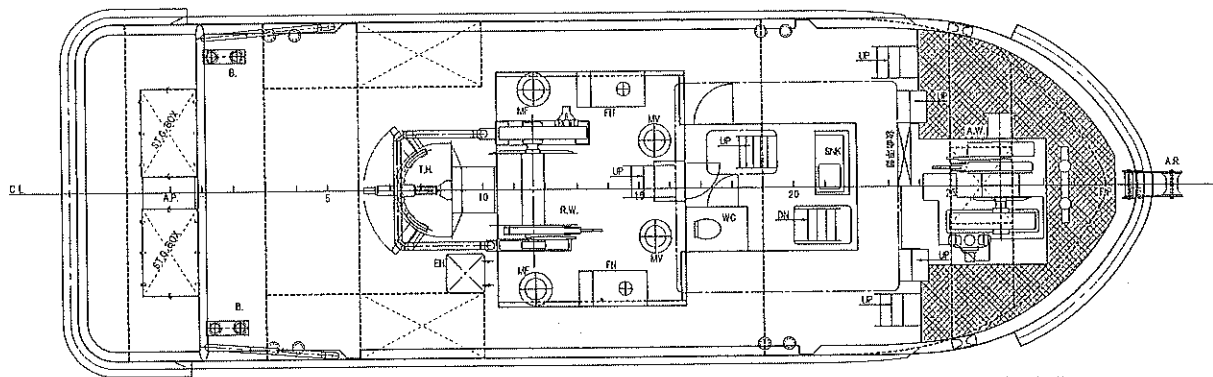
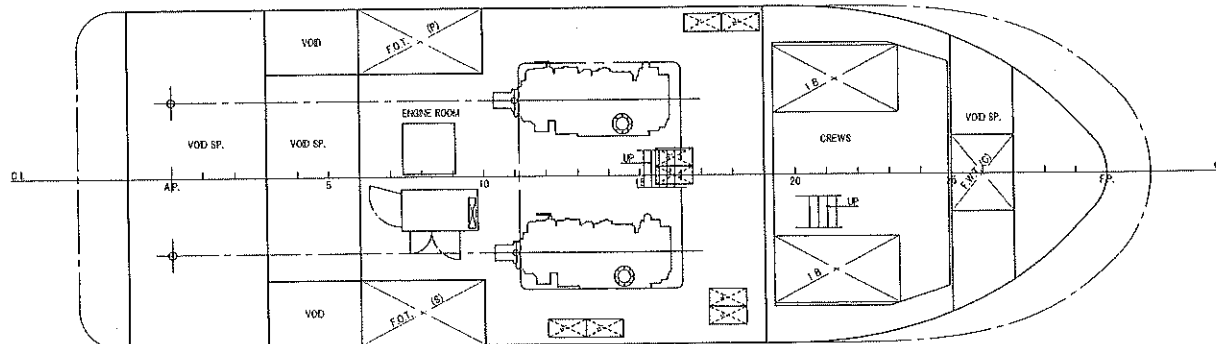


UPPER DECK PLAN



BOTTOM PLAN



| PRINCIPAL PARTICULARS | |
|-----------------------|--------------|
| LENGTH (OA) | 17.00 (M) |
| LENGTH (PP) | 15.00 (M) |
| BREADTH (MLD) | 5.30 (M) |
| DEPTH (MLD) | 1.92 (M) |
| DRAFT (DWL) | 1.40 (M) |
| GROSS TONNAGE | 19GT |
| RULE | JCI 沿海区域 |
| M.ENG. | 749kw × 2SET |
| CREW | 2P |
| OTHERS | 8P |

設計検査済
 平成 28 年 4 月 28 日
 日本小型船舶検査機構 (三角)

FINAL DRAWING



| | | | |
|--|--------------|-------------|-------------|
| OWNER | 協榮海士木株式会社 股 | SHIP'S NAME | 第七十八協榮丸 |
| TYPE | 19GT型 引船兼作業船 | SNO. | 478 |
| SHIP DESIGNING SECTION | JCI | 一般配置図 | |
| APPROVED | | | |
| CHECKED | | | |
| DRAWN | II T | | |
| SCALE | A2: 1/60 | DRAWING NO. | SO 00200-F0 |
| LIST NO. | | | |
| KUMAMOTO DOCK CO., LTD. <small>213, MINATO-HUCHI, YATSUSHIRO-SHI, KUMAMOTO-KEN, JAPAN</small> | | | |